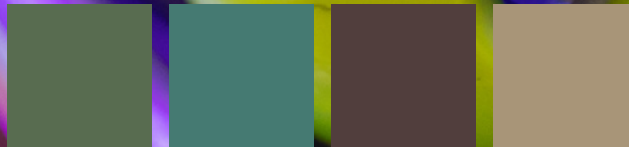
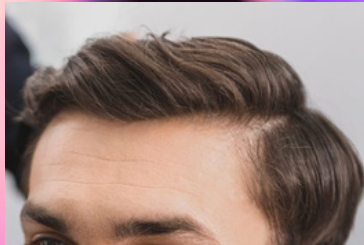
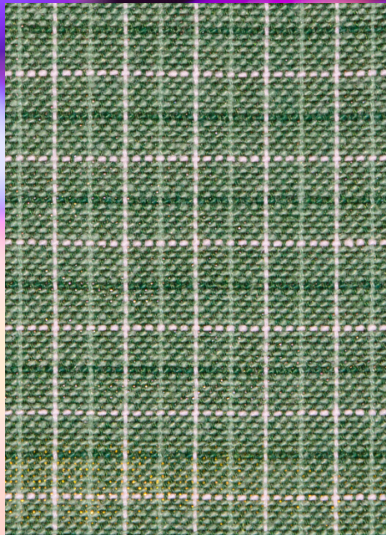




THE BOWLING PLAY



# PETE



COLOR  
PALETTE

- Handsome but lightly nerdy. Not sloppy but, not trendy.
- Already has his bowling shoes on at the start of the play.
- Khakis, open button down, with t-shirt.



# Ali



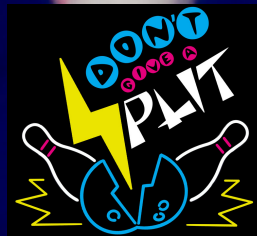
COLOR  
PALETTE

- Casual and trendy
- Jeans, casual top, possibly lightweight jacket, slip on sneakers.
- Basic rental bowling shoes





# RONNIE



COLOR  
PALETTE

- A little nerdy, a little plain.
- Glasses
- Groomed beard
- Dress to bowl with league shirt on when he enters.
- Bowling shoes will be in his bag.





COLOR PALETTE

- "Average Joe"
- Simple crew cut, clean shaven.
- Enters wearing his everyday clothes.
- Changes into his league shirt on stage.
- Jeans and a jacket over t-shirt.
- Changes into bowling shoes on stage.



# BUSTER



COLOR  
PALETTE

- Slightly nerdy
- Changes into his bowling shirt and bowling shoes on stage.
- Grey denim with a loud colored hoodie and a t-shirt underneath.
- Curled mustache with goatee or chin strap beard.

# Tiffani

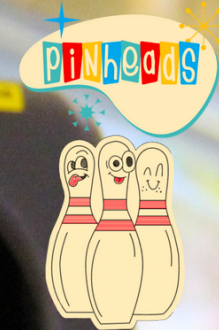


COLOR  
PALETTE

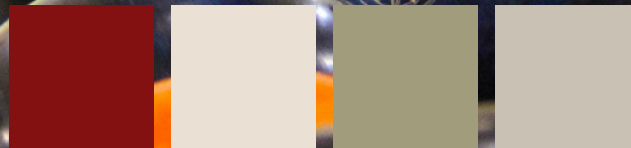
- Pink.
- High ponytail or braid.
- Manicured nails
- Tall leather heeled boots.
- Oversized pink bowling shirt or super short pink bowling dress.
- Earrings, bling, purse, possible bedazzled bowling shirt.
- Will have rental shoes at some point on stage.



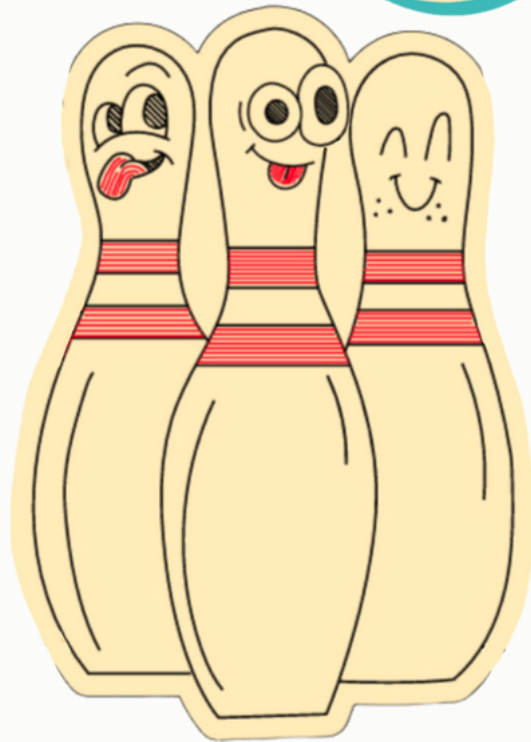
# WILLIE \* ROGER \* ART



- Pinheads Bowling League - Bold Red
- Removable name tags to help identify each character.
- Rental shoes
- Khaki pants
- Willie: Bad hair/combover, aviator style glasses
- Roger: Baseball cap, gum chewer
- Art: Low ponytail, fannypack or lanyard, sporty glasses



COLOR  
PALETTE







Willie

